

Control Number: 43485



Item Number: 1

Addendum StartPage: 0

43485

Certification Form for Renewable Energy Credit Generators

RECEIVED
2014 OCT -7 AM 10:17
PUBLIC UTILITY COMMISSION
FILING CLERK

Information about Generating Unit(s)

1.	Facility Name or Description	Stephens Ranch Wind Energy, LLC
2.	Street Address or Legal Geographical Location	2186 COUNTRY ROAD 131 O'DONNELL, TX 79351
3.	Name of Owner	Stephens Ranch Wind Energy, LLC
4.	Owner PUC Registration (for Subst. Rule §25.109)	Stephens Ranch Wind Energy, LLC (PUCT registration No. 20329)
5.	On-site Contact Person (if applicable)	
6.	On-site Telephone Number (if applicable)	
7.	Type of Renewable Generating Technology	<input type="checkbox"/> Biomass <input type="checkbox"/> Hydroelectric <input type="checkbox"/> Solar <input checked="" type="checkbox"/> Wind <input type="checkbox"/> Other (specify):
8.	Fossil Fuels Used (if any)	
9.	TNRCC Air Permit Number (if any)	
10.	Meters (ISO Numbers or Other Identifiers)	EPS Meter # GSECSTEPHENSWF2014 (meter is located at the Long Draw Substation shown on the attached map)
11.	Percentage to be Subtracted from Annual Metered Generation	0
12.	Metered Generation Eligible for Renewable Energy Credits (in MW)	211.22 MW

13.	<p>Please complete the following for each generating unit operating at this facility. Include additional pages as necessary. For sites with large numbers of individual units, complete the attachment entitled "List of Generating Units at Facility" and enter "See attached list" in the first three blanks of this section. For older units upgraded and repowered after Sept. 1999, include one page describing the unit before the upgrade, and another page describing the incremental addition to capacity resulting from the upgrade.</p>	
	Manufacturer	See attached list
	Serial Number(s)	See attached list
	Date Commercial Operation Began / Will Begin	See attached list
	Total Rated Nameplate Capacity	211.22 MW
	<p>Is this a fossil fuel unit that has been or will be repowered to use a renewable fuel?</p> <p>Yes _____ No <u>X</u></p>	
	<p>Is this unit developed as part of an emissions reduction project described in Health and Safety Code §382.05193, that is being used to satisfy the permit requirements in Health and Safety Code §382.0519?</p> <p>Yes _____ No <u>X</u></p>	
	<p>If the generating unit is owned by or under contract to a utility, an electric cooperative, municipally-owned utility, competitive retailer, or river authority, is any portion of this unit's above-market costs included in the rates of any utility, municipally owned utility or distribution cooperative through base rates, a power cost recovery factor, stranded cost recovery mechanism or any other fixed or variable rate element charged to end users?</p> <p>Yes _____ No _____</p> <p>If the answer is "yes" at the date this application is filed, state the date when the answer would become "no." Provide documentation to support this change of status.</p> <p>Date _____</p>	
	<p>Does this unit qualify for Renewable Energy Credit Offsets?</p> <p>Yes _____ No <u>X</u></p>	

Name, Mailing Address and Telephone of Generating Facility Owner

Stephens Rand Wind Energy, LLC
c/o Starwood Energy Group Global, L.L.C.
591 West Putnam Avenue
Greenwich, CT 06380

Phone: 203-442-7700

Name, Mailing Address and Telephone of Owner's Designated Representative

Rita Brady
Consolidated Asset Management Services
919 Milam Street, Suite 2300
Houston, TX 77002


Phone: 713-358-9758

Name, Mailing Address and Telephone of Alternate Representative

Matthew Lindsey
Consolidated Asset Management Services
919 Milam Street, Suite 2300
Houston, TX 77002

Phone: 713-358-9734

I certify that I have reviewed and will comply with the provisions in Section 14, "Renewable Energy Credit Trading Program" of the ERCOT Protocols. I certify that the information presented in this Certification Form is correct. I further certify that the generating facility owner (or designated representative) shall inform the Project Administrator of any change that renders the information contained in this certification obsolete, and that such notification will be provided in writing no later than 30 days after the change is discovered by the owner.



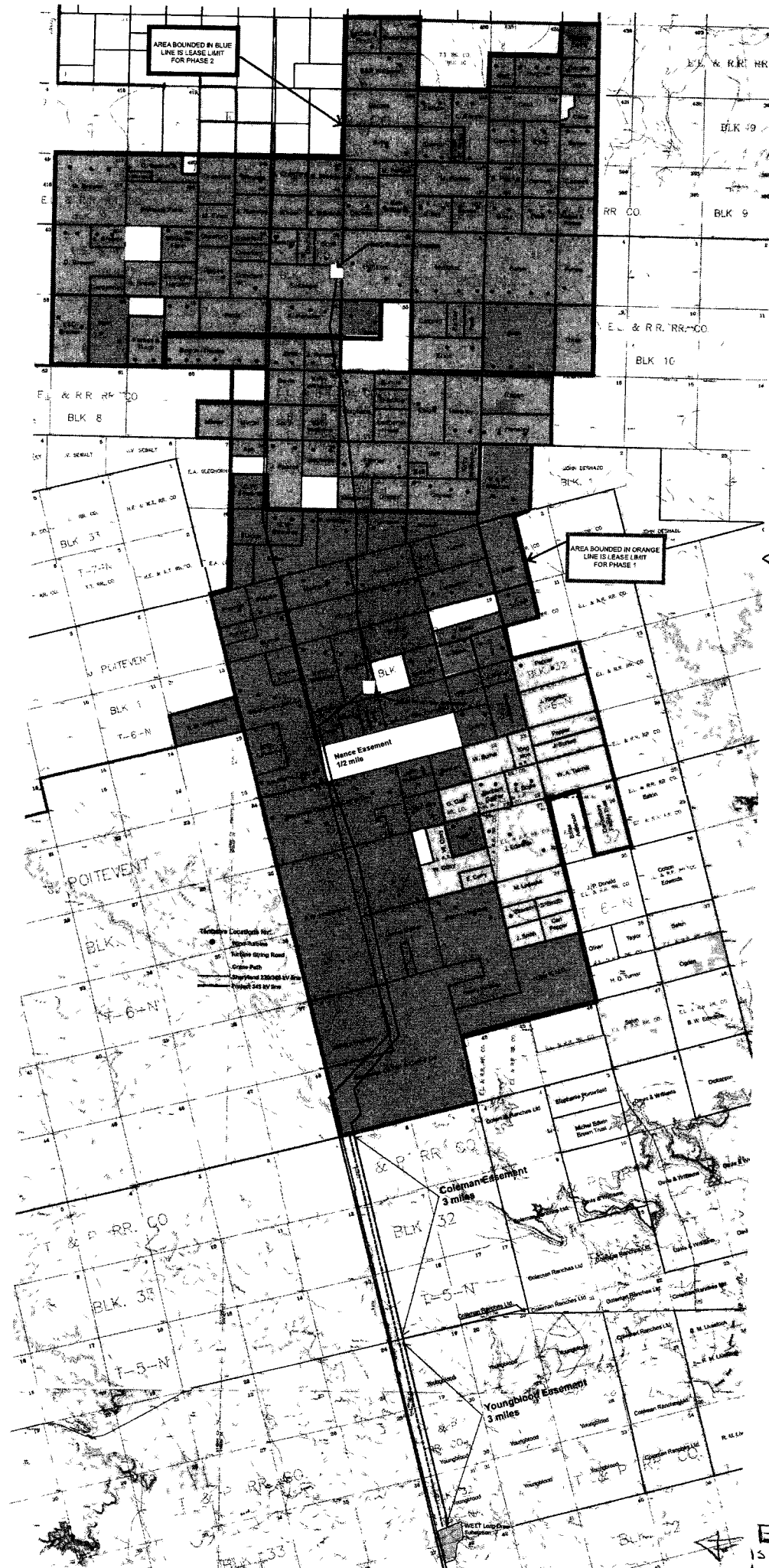
Owner of Generating Facility or Designated Representative

10-3-2014

Date

List of Generating Units at Facility

Manufacturer and Make	Unit Number *	Serial Number (for Base Tower)	Date Commercial Operation Began/Begins	Capacity per Unit (in MW)	Number of Units	Capacity (in MW)
General Electric Model 1.7-100	88	705947-102-01090-W86J	12/8/2014	1.79	1	1.79
General Electric Model 1.7-100	89	J23798-101-00152-W86J	12/8/2014	1.79	1	1.79
General Electric Model 1.7-100	90	J23798-101-00097-W86J	12/8/2014	1.79	1	1.79
General Electric Model 1.7-100	91	J23798-101-00112-W86J	12/8/2014	1.79	1	1.79
General Electric Model 1.7-100	92	J23798-101-00083-W86J	12/8/2014	1.79	1	1.79
General Electric Model 1.7-100	93	J23798-101-00110-W86J	12/8/2014	1.79	1	1.79
General Electric Model 1.7-100	97	705947-102-01039-W86J	12/8/2014	1.79	1	1.79
General Electric Model 1.7-100	98	J23798-101-00118-W86J	12/8/2014	1.79	1	1.79
General Electric Model 1.7-100	99	705947-102-01040-W86J	12/8/2014	1.79	1	1.79
General Electric Model 1.7-100	100	705947-102-01082-W86J	12/8/2014	1.79	1	1.79
General Electric Model 1.7-100	109	J23798-101-00171-W86J	12/8/2014	1.79	1	1.79
General Electric Model 1.7-100	110	J23798-101-00167-W86J	12/8/2014	1.79	1	1.79
General Electric Model 1.7-100	111	J23798-101-00149-W86J	12/8/2014	1.79	1	1.79
General Electric Model 1.7-100	112	J23798-101-00151-W86J	12/8/2014	1.79	1	1.79
General Electric Model 1.7-100	113	705947-102-01021-W86J	12/8/2014	1.79	1	1.79
General Electric Model 1.7-100	114	J23798-101-00157-W86J	12/8/2014	1.79	1	1.79
General Electric Model 1.7-100	115	705947-102-01154-W86J	12/8/2014	1.79	1	1.79
General Electric Model 1.7-100	116	705947-102-01159-W86J	12/8/2014	1.79	1	1.79
General Electric Model 1.7-100	117	J23798-101-00177-W86J	12/8/2014	1.79	1	1.79
General Electric Model 1.7-100	118	J23798-101-00174-W86J	12/8/2014	1.79	1	1.79
General Electric Model 1.7-100	119	705947-102-01158-W86J	12/8/2014	1.79	1	1.79
General Electric Model 1.7-100	120	705947-102-01094-W86J	12/8/2014	1.79	1	1.79
General Electric Model 1.7-100	121	J23798-101-00125-W86J	12/8/2014	1.79	1	1.79
General Electric Model 1.7-100	122	705947-102-01096-W86J	12/8/2014	1.79	1	1.79
General Electric Model 1.7-100	123	J23798-101-00120-W86J	12/8/2014	1.79	1	1.79
General Electric Model 1.7-100	124	705947-102-01098-W86J	12/8/2014	1.79	1	1.79
General Electric Model 1.7-100	125	J23798-101-00119-W86J	12/8/2014	1.79	1	1.79
General Electric Model 1.7-100	126	705947-102-01130-W86J	12/8/2014	1.79	1	1.79
General Electric Model 1.7-100	127	J23798-101-00176-W86J	12/8/2014	1.79	1	1.79
General Electric Model 1.7-100	128	705947-102-01022-W86J	12/8/2014	1.79	1	1.79
General Electric Model 1.7-100	129	J23798-101-00148-W86J	12/8/2014	1.79	1	1.79
General Electric Model 1.7-100	130	705947-102-00952-W86J	12/8/2014	1.79	1	1.79
General Electric Model 1.7-100	131	705947-102-01018-W86J	12/8/2014	1.79	1	1.79
General Electric Model 1.7-100	132	705947-102-00960-W86J	12/8/2014	1.79	1	1.79
General Electric Model 1.7-100	133	J23798-101-00102-W86J	12/8/2014	1.79	1	1.79
General Electric Model 1.7-100	134	705947-102-01046-W86J	12/8/2014	1.79	1	1.79
General Electric Model 1.7-100	135	705947-102-01097-W86J	12/8/2014	1.79	1	1.79
General Electric Model 1.7-100	136	705947-102-00979-W86J	12/8/2014	1.79	1	1.79
General Electric Model 1.7-100	137	705947-102-01099-W86J	12/8/2014	1.79	1	1.79
General Electric Model 1.7-100	138	J23798-101-00121-W86J	12/8/2014	1.79	1	1.79
General Electric Model 1.7-100	139	J23798-101-00124-W86J	12/8/2014	1.79	1	1.79
General Electric Model 1.7-100	140	705947-102-01103-W86J	12/8/2014	1.79	1	1.79
General Electric Model 1.7-100	141	J23798-101-00114-W86J	12/8/2014	1.79	1	1.79
General Electric Model 1.7-100	142	705947-102-01100-W86J	12/8/2014	1.79	1	1.79
General Electric Model 1.7-100	143	J23798-101-00138-W86J	12/8/2014	1.79	1	1.79
General Electric Model 1.7-100	144	705947-102-01105-W86J	12/8/2014	1.79	1	1.79
General Electric Model 1.7-100	145	J23798-101-00130-W86J	12/8/2014	1.79	1	1.79
General Electric Model 1.7-100	146	J23798-101-00133-W86J	12/8/2014	1.79	1	1.79
General Electric Model 1.7-100	147	J23798-101-00123-W86J	12/8/2014	1.79	1	1.79
General Electric Model 1.7-100	148	J23798-101-00115-W86J	12/8/2014	1.79	1	1.79
General Electric Model 1.7-100	149	705947-102-01139-W86J	12/8/2014	1.79	1	1.79
General Electric Model 1.7-100	150	705947-102-00959-W86J	12/8/2014	1.79	1	1.79
General Electric Model 1.7-100	151	705947-102-01140-W86J	12/8/2014	1.79	1	1.79
General Electric Model 1.7-100	152	J23798-101-00153-W86J	12/8/2014	1.79	1	1.79
General Electric Model 1.7-100	153	705947-102-01026-W86J	12/8/2014	1.79	1	1.79
General Electric Model 1.7-100	154	705947-102-00986-W86J	12/8/2014	1.79	1	1.79
General Electric Model 1.7-100	155	J23798-101-00105-W86J	12/8/2014	1.79	1	1.79
General Electric Model 1.7-100	156	J23798-101-00103-W86J	12/8/2014	1.79	1	1.79



AREA BOUNDED IN BLUE LINE IS LEASE LIMIT FOR PHASE 2

AREA BOUNDED IN ORANGE LINE IS LEASE LIMIT FOR PHASE 1

Nence Easement
1/2 mile

Coleman Easement
3 miles

Youngblood Easement
3 miles

Area within ORANGE boundary is STEPHENS RANCH Wind Energy LLC (also known as Phase 1). Area in Blue border will be registered as a separate project with the PUCT.

EPS meter is at WETT LONG DRAW SUBSTATION