

PUBLIC NOTICE

Wheatridge Wind Energy Facility

Corrected Amended Notice of Public Hearings and Request for Comments

Wheatridge Wind Energy Facility Draft Proposed Order

Summary

Date Issued: May 16, 2016

Proposal: Wheatridge Wind Energy, LLC seeks a site certificate to construct and operate up to 292 wind turbines with a combined peak generating capacity of up to 500 megawatts.

Facility Location: Morrow and Umatilla counties, Oregon

Public Hearings:

Dates: **Thursday, May 19, 2016 (Hearing 1)**
Monday, June 6, 2016 (Hearing 2)

Time: **6 p.m.***

Location: **Boardman City Hall***
200 City Center Dr.
Boardman, OR 97818

*The time and location apply to both hearing dates

Comment Deadline: June 6, 2016 (close of the final public hearing)

Introduction

The Oregon Department of Energy (department), staff to the Energy Facility Siting Council (EFSC or Council), received an Application for Site Certificate (application) from Wheatridge Wind Energy, LLC (applicant) for the construction and operation of the Wheatridge Wind Energy Facility (proposed facility), a wind generation facility with a nominal generating capacity of 500 megawatts. Under Oregon law, the applicant must obtain a site certificate from EFSC before constructing and operating the proposed facility. The department issued a Draft Proposed Order on the application on April 27, 2016. The Draft Proposed Order recommends EFSC approve the application and grant a Site Certificate, subject to the conditions listed in the order. The purpose of this amended notice is to notify the public of the addition of a 2nd hearing and the extension of the comment deadline.

Description of the Proposed Facility

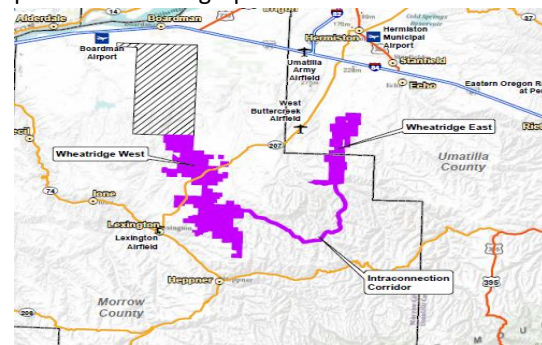
The proposed facility would consist of up to 292 wind turbines divided into two groups: Wheatridge West and Wheatridge East; and an interconnection corridor containing up to two parallel overhead 230-kilovolt (kV)

transmission lines connecting Wheatridge West and Wheatridge East. In addition, the proposed facility includes the following related and supporting facilities:

- 34.5-kV collector lines and substations
- Meteorological tower
- Communication and SCADA System
- Operations and maintenance buildings
- Access roads
- Temporary construction areas
- Temporary concrete batch plants

Location of Proposed Facility

The Wheatridge Wind Energy Facility is proposed to be located on approximately 13,097 acres of privately owned land within Morrow and Umatilla counties, as presented in the graphic below.



For detailed maps, please see the department website at the link below or Exhibit B of the application.

Public Hearings and Comment Period

Public hearings on the Draft Proposed Order will be held at 6 p.m. on Thursday, May 19, 2016 and Monday, June 6, 2016 at the Boardman City Hall (it is not necessary for participants to attend both hearings). Written comments are due no later than the close of the final public hearing on June 6, 2016.

Written comments may be submitted prior to the final public hearing by mail, email, hand-delivery or fax to the hearing officer, in care of:

Sarah Esterson, Siting Analyst
Oregon Department of Energy
625 Marion Street NE, Salem, OR 97301
Email: WRW.Comments@state.or.us
Phone: 503-373-7945
Fax: 503-373-7806

Written or oral comments may also be provided at the public hearings. The Council will not accept comments on the application or on the Draft Proposed Order after the close of the record at the conclusion of the final public hearing.

To be eligible to participate in a contested case on this application, a person must raise an issue either in person at one of the public hearings or in a written comment submitted after April 27, 2016 and received by the department before the record closes on June 6, 2016. Even if a person commented before April 27, 2016, that person must raise issues, either in person at one of the public hearings or in writing during the comment period, to be eligible to participate in the contested case.

For consideration in the contested case, issues raised must be within the Council's jurisdiction and must be raised with sufficient specificity so that the Council, the department, and the applicant understand the issue being raised and are afforded an opportunity to respond to the issue. To raise an issue with sufficient specificity, a person must present facts that support the person's position on the issue.

EFSC Decision Process

Following the final public hearing, the Council will review the Draft Proposed Order and public hearing comments at its regularly scheduled Council meeting on June 17, 2016. Following its review, either at that meeting or at a subsequent meeting, the Council will direct agency staff to prepare and issue a Proposed Order to approve or deny the application, and to issue a Notice of Contested Case. Following the contested case, the Council will issue a Final Order on the application. More information about the contested case process is available on the department's website at <http://www.oregon.gov/energy/Siting/Pages/process.aspx#contested>

More Information

You can find more information and updates on the review process using any of the options below:

1) Contacting the project Siting Analyst

Sarah Esterson, Siting Analyst
Oregon Department of Energy
625 Marion St, NE
Salem, OR 97301
Email: sarah.esterson@state.or.us
Phone: 503-373-7945

2) The department's website

More details on the Wheatridge Wind Energy Facility, including the application and the Draft Proposed Order, are available online at: <https://services.oregon.gov/energy/Siting/Pages/RW.aspx>

3) Updates by email

Subscribe to GovDelivery for email updates on the Wheatridge Wind Energy Facility or other energy facilities under EFSC jurisdiction. GovDelivery is an automated email system that allows interested members of the public to receive information about the department's projects and events. For more information, please visit: <http://tinyurl.com/EFSC-email>.

4) In hardcopy

Copies of the application and Draft Proposed Order are available for public inspection at:

Oregon Trail Library District
444 North Main Street
Heppner, OR 97836

Oregon Department of Energy
625 Marion Street
NE Salem, OR 97301

Accessibility information

The department is committed to accommodating people with disabilities. If you require any special physical or language accommodations, or need information in an alternate format, please contact Matt Lawyer at 503-378-3895, toll-free in Oregon at 800-221-8035, or via email to matthew.lawyer@state.or.us. TTY users should call the Oregon Relay Service at 711.