

PUBLIC NOTICE

Proposed Wheatridge Wind Energy Facility

Notice of Proposed Order

Issuance of Proposed Order

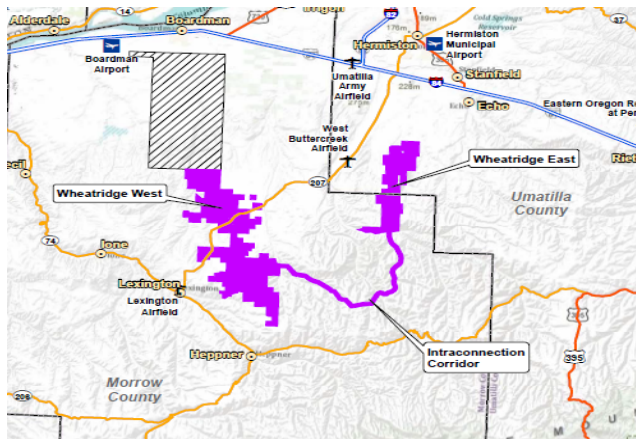
The Oregon Department of Energy, staff to the Energy Facility Siting Council (EFSC), issued a proposed order on the proposed Wheatridge Wind Energy Facility on August 5, 2016. The proposed order recommends EFSC approve the application and grant a Site Certificate, subject to the conditions in the order.

Facility Description

The proposed facility would consist of up to 292 wind turbines divided into two groups: Wheatridge West and Wheatridge East. Related and supporting facilities to the proposed energy facility include: up to two parallel overhead 230-kilovolt (kV) transmission lines connecting Wheatridge West and Wheatridge East (intraconnection transmission line); 34.5-kV collector lines and substations; meteorological towers; communications and supervisory control and data acquisition systems; operations and maintenance buildings; access roads; temporary construction areas; and temporary concrete batch plants.

Location of Proposed Facility

The Wheatridge Wind Energy Facility is proposed to be located within Morrow and Umatilla counties.



Contested Case Process

Following issuance of the proposed order, the Council must conduct a contested case proceeding on the application for site certificate.

Only those individuals or organizations that commented on the record of the public hearing, either in person at the public hearings on May 19 or June 6, 2016, or in writing between April 27, 2016 and June 6, 2016, are eligible to make a request to participate in the contested case. To raise an issue in the contested case, the issue must be within the jurisdiction of the Council and the individual or organization requesting party status must have raised the issue on the record of the public hearing. Additionally, in this case, the department is recommending some conditions in the proposed order that differ materially from the conditions recommended in the draft proposed order. Because of these material changes, individuals or organizations that commented on the record of the public hearing may also raise new issues within the jurisdiction of the Council that are related to these differences. All those eligible to participate in the contested case will receive a Notice of Contested Case by certified mail, describing the requirements for requesting to participate in the contested case.

If you believe you are eligible to participate in the contested case and do not receive a Notice of Contested Case via certified mail, please contact Sarah Esterson, Siting Analyst, at sarah.esterson@oregon.gov, or at 503-373-7945.

The deadline to request party status or limited party status is **August 26, 2016 at 5 p.m.**

Pre-Hearing Conference

For those eligible to participate in the contested case, a pre-hearing conference will be held by telephone on **September 23, 2016**, unless rescheduled by the hearing's officer.

Following the pre-hearing conference, the hearing officer will determine the schedule for the contested case hearing.

EFSC Decision Process

Following the contested case, the Council will issue a Final Order on the Application for Site Certificate. More information about the contested case process is available on the department of Energy's website at www.oregon.gov/energy/Siting/Pages/process.aspx

More Information

More information about the proposed facility and the review process is available using any of the options listed below. If you need more information, please contact Sarah Esterson, Siting Analyst, by email at sarah.esterson@oregon.gov or phone at or 503-373-7945.

1) ODOE's website

More details on the proposed Wheatridge Wind Energy Facility, including the Application for Site Certificate and the proposed order, are available online on at: <https://www.oregon.gov/energy/Siting/Pages/WRW.aspx>

2) Updates by email

Subscribe to GovDelivery for email updates on the proposed Wheatridge Wind Energy Facility or other energy facilities under EFSC jurisdiction. GovDelivery is an automated email system that allows interested members of the public to receive information about ODOE projects and events. For more information, please visit: <http://tinyurl.com/EFSC-email>.

3) In hardcopy

Copies of the Application for Site Certificate and proposed order are available for public inspection at:

Oregon Trail Library District
Heppner Branch
444 North Main Street
Heppner, OR 97836

Oregon Department of Energy
625 Marion Street NE
Salem, OR 97301

Accessibility information

ODOE is committed to accommodating people with disabilities. If you require any special physical or language accommodations, or need information in an alternate format, please contact Matt Lawyer at 503-378-3895, toll-free in Oregon at 800-221-8035, or via email to matthew.lawyer@oregon.gov